

**Omega**  
C E R A D E C O R

**Omega**  
C E R A D E C O R

**OMEGA CERA DECOR**

Survey No. 35/P9, Opp Jaxx Vitrified Pvt. Ltd.  
Pipali - Jetpar Road, Morbi 363 642.

Call.  
**+91 99799 45546**

Mail.  
**omegaceradecor@gmail.com**

Web.  
**www.omega.com**

sfumato india pvt. ltd. Aug 2022

design to deliver

**Style &  
Uniqueness**

**Golden &  
Silver Tiles**  
...  
**300x450mm**

## COMPANY PROFILE

Let OMEGA TILES keep influence and inspire manufacture and designer in ceramic industries through its art of unique décor and golden – silver highlighter collection that bring out aesthetic interior world. Brilliance, beauty, and creative highlighter collection for interior wall that is bursting with extraordinary visual intensity.

In an era of glamorous world, people want their interior center of attraction and OMEGA TILES golden –silver highlighter collection perfectly fit in. Blending the traditional craftsmanship with the latest technology golden – silver highlighter made by OMEGA TILES with varieties of colors, pattern and design that match everyone's mood.

[www.omega.com](http://www.omega.com)

### Golden & Silver Tiles



**Omega**  
CERA DECOR

**GOL-  
DEN  
&  
SIL-  
VER**

Make your decor extraordinary.  
we are presenting superior  
collection for your every  
ambience that make your  
ambience mesmerizing for  
everyone.



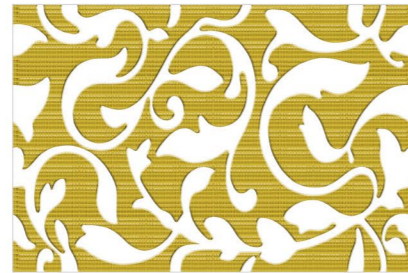


**300x450mm** — **Golden & Silver**  
Highlighter

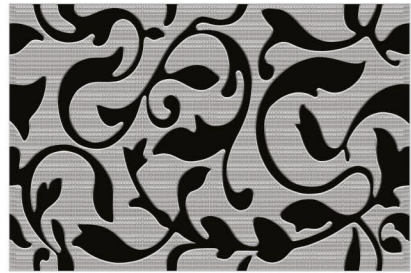
**Application**



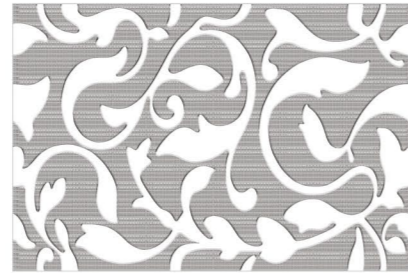
G-101-BLACK



G-101-WHITE



S-101-BLACK



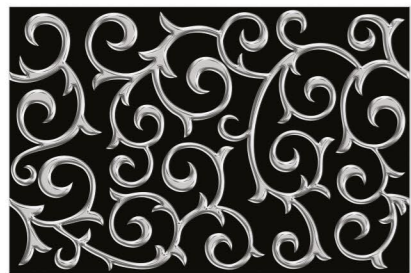
S-101-WHITE



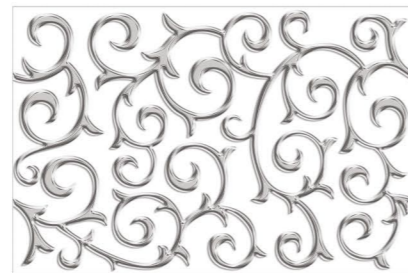
G-111-BLACK



G-111-WHITE



S-111-BLACK



S-111-WHITE

**PACKING DETAILS**

Size : 300x450mm

Tiles Per Box 10 pcs.	Weight Per Box 18.5 kg. (Approx)	Area Coverage Per Box 1.35 Sq. Mtr.	Box Packing Type Thermocol
--------------------------	-------------------------------------	--	-------------------------------

[www.omega.com](http://www.omega.com)



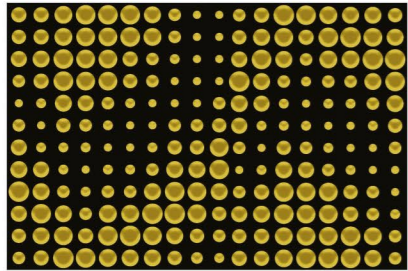
*Thoughtful design*



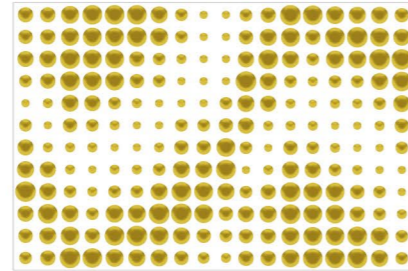


**300x450mm — Golden & Silver Highlighter**

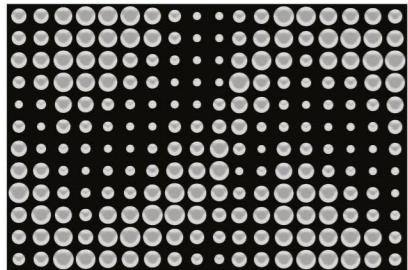
**Application**



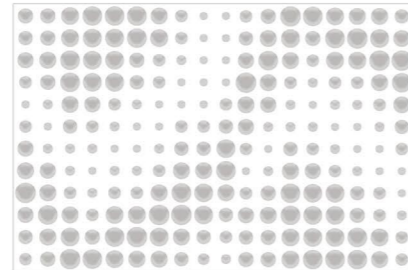
G-201-BLACK



G-201-WHITE



S-201-BLACK



S-201-WHITE



G-222



S-222



**PACKING DETAILS**

Size : 300x450mm

Tiles Per Box 10 pcs.	Weight Per Box 18.5 kg. (Approx)	Area Coverage Per Box 1.35 Sq. Mtr.	Box Packing Type Thermocol
--------------------------	-------------------------------------	--	-------------------------------



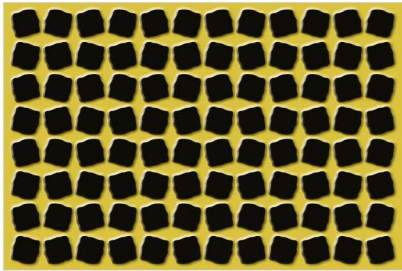
www.omega.com



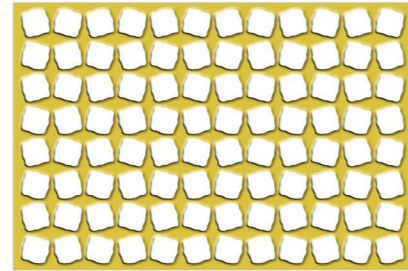


**300x450mm** — **Golden & Silver**  
Highlighter

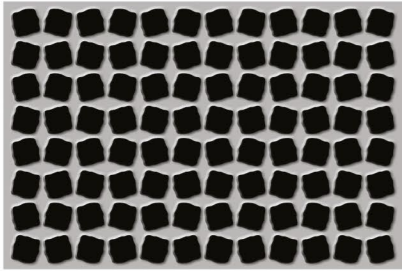
**Application**



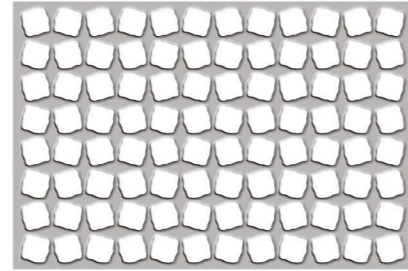
G-301-BLACK



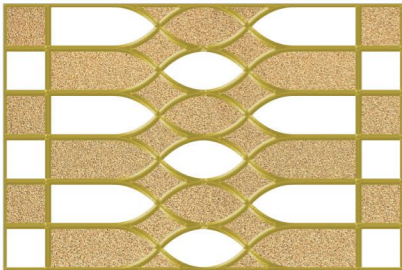
G-301-WHITE



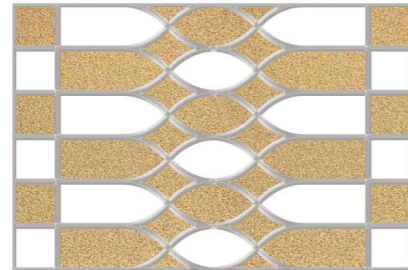
S-301-BLACK



S-301-WHITE



G-333-CAPSUL



S-333-CAPSUL

**PACKING DETAILS**

Size : 300x450mm

Tiles Per Box 10 pcs.	Weight Per Box 18.5 kg. (Approx)	Area Coverage Per Box 1.35 Sq. Mtr.	Box Packing Type Thermocol
--------------------------	-------------------------------------	--	-------------------------------



www.omega.com



*lomites*

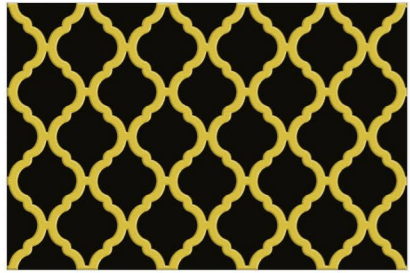
*Infinitely  
luxurious*



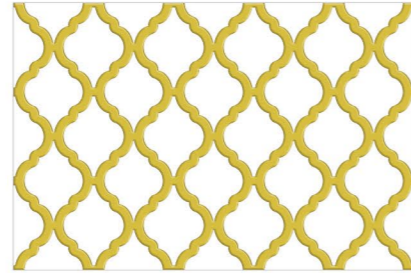


**300x450mm** — **Golden & Silver**  
Highlighter

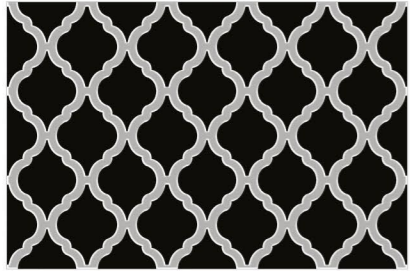
Application



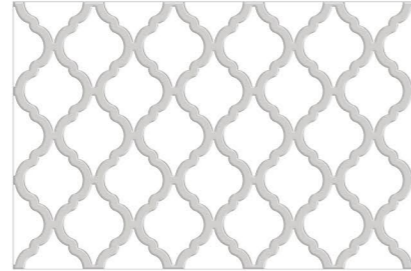
G-401-BLACK



G-401-WHITE



S-401-BLACK



S-401-WHITE



*Majestically superior*

**PACKING DETAILS**

Size : 300x450mm

Tiles Per Box 10 pcs.	Weight Per Box 18.5 kg. (Approx)	Area Coverage Per Box 1.35 Sq. Mtr.	Box Packing Type Thermocol
--------------------------	-------------------------------------	--	-------------------------------



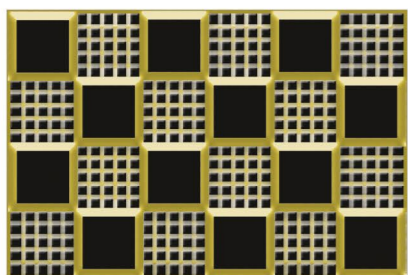
www.omega.com



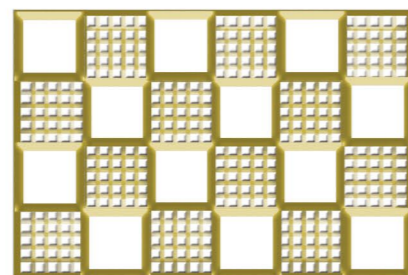


**300x450mm** — **Golden & Silver** Highlighter

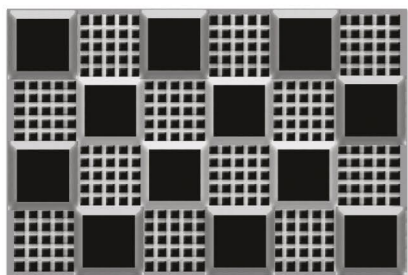
Application



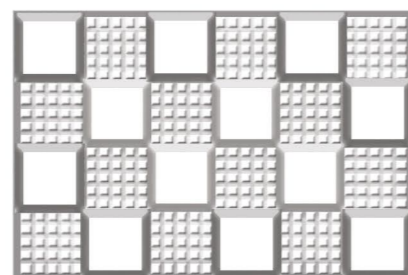
G-444-BLACK



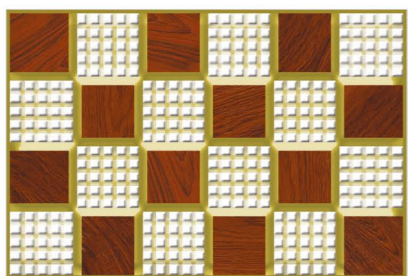
G-444-WHITE



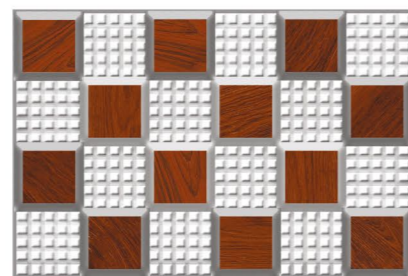
S-444-BLACK



S-444-WHITE



G-444-WOODEN



S-444-WOODEN



*Classic impressions*

**PACKING DETAILS**

Size : 300x450mm

Tiles Per Box 10 pcs.	Weight Per Box 18.5 kg. (Approx)	Area Coverage Per Box 1.35 Sq. Mtr.	Box Packing Type Thermocol
--------------------------	-------------------------------------	--	-------------------------------



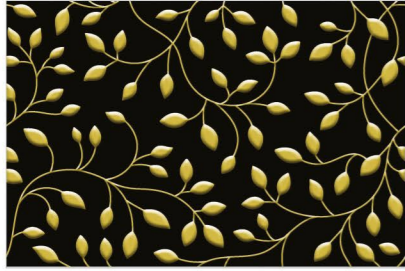
www.omega.com



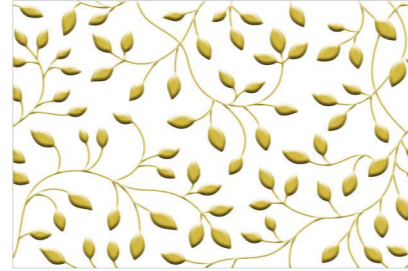


**300x450mm** — **Golden & Silver**  
Highlighter

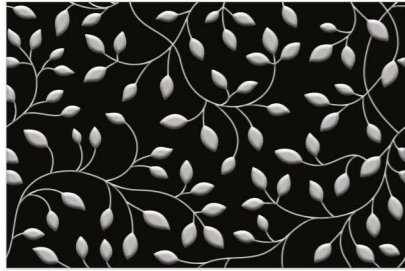
**Application**



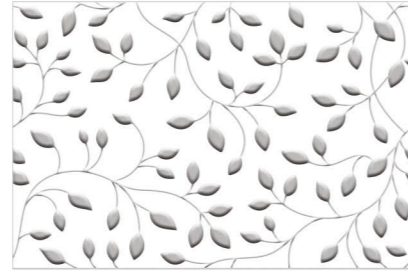
G-501-BLACK



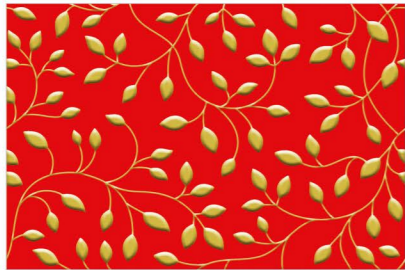
G-501-WHITE



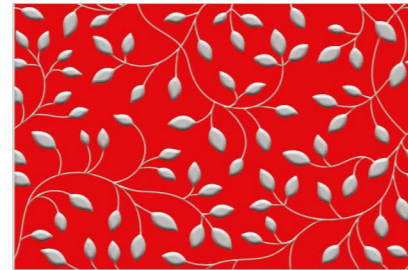
S-501-BLACK



S-501-WHITE



G-501-RED



S-501-RED



**PACKING DETAILS**

Size : 300x450mm

Tiles Per Box 10 pcs.	Weight Per Box 18.5 kg. (Approx)	Area Coverage Per Box 1.35 Sq. Mtr.	Box Packing Type Thermocol
--------------------------	-------------------------------------	--	-------------------------------



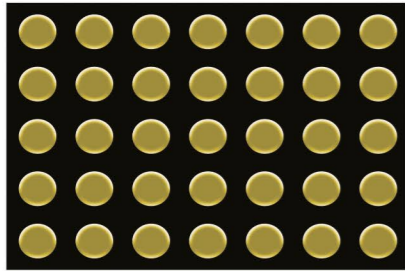
[www.omega.com](http://www.omega.com)



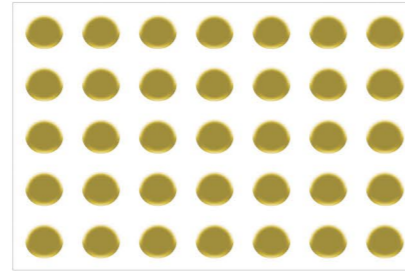


# 300x450mm — Golden & Silver Highlighter

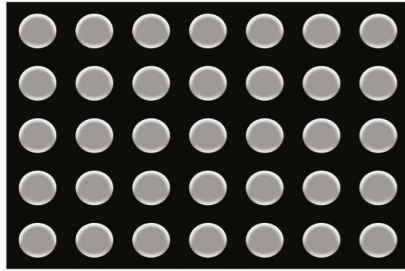
### Application



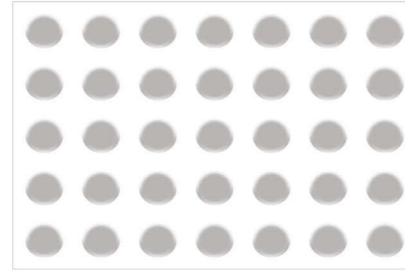
G-555-BLACK



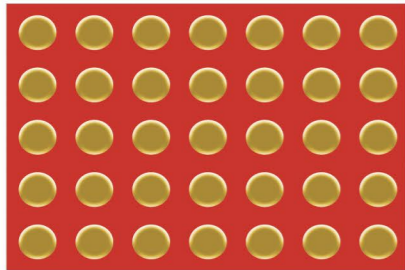
G-555-WHITE



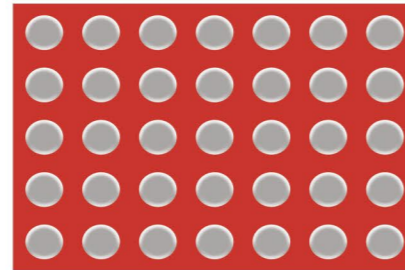
S-555-BLACK



S-555-WHITE



G-555-RED



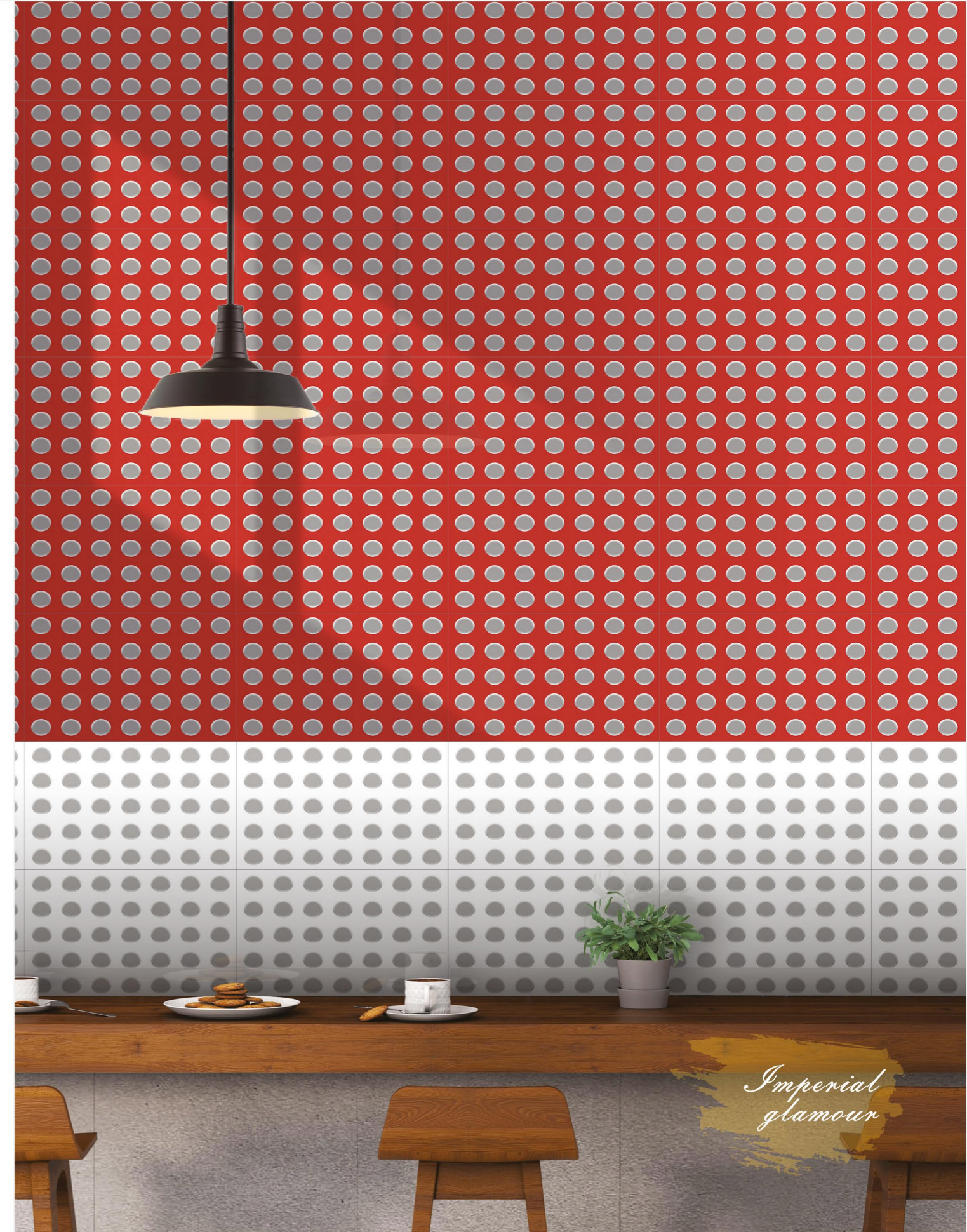
S-555-RED

### PACKING DETAILS

Size : 300x450mm

Tiles Per Box 10 pcs.	Weight Per Box 18.5 kg. (Approx)	Area Coverage Per Box 1.35 Sq. Mtr.	Box Packing Type Thermocol
--------------------------	-------------------------------------	--	-------------------------------

[www.omega.com](http://www.omega.com)

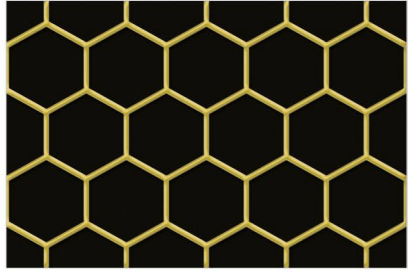




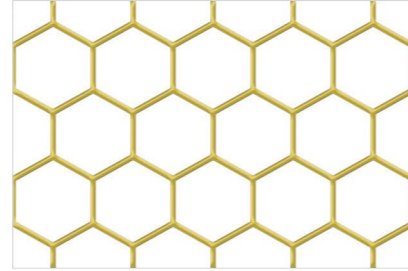


**300x450mm — Golden & Silver**  
Highlighter

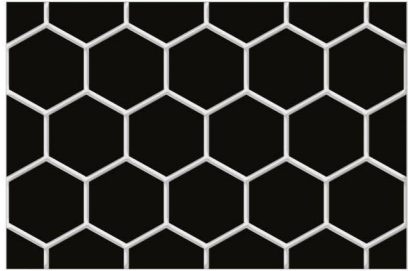
Application



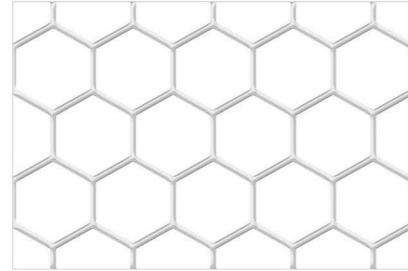
G-601-BLACK



G-601-WHITE



S-601-BLACK



S-601-WHITE



G-666-BLACK



G-666-WHITE



S-666-BLACK



S-666-WHITE

**PACKING DETAILS**

Size : 300x450mm

Tiles Per Box 10 pcs.	Weight Per Box 18.5 kg. (Approx)	Area Coverage Per Box 1.35 Sq. Mtr.	Box Packing Type Thermocol
--------------------------	-------------------------------------	--	-------------------------------

[www.omega.com](http://www.omega.com)



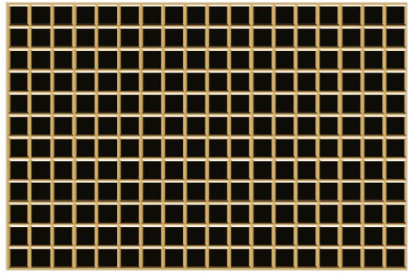
*Splendid creation*



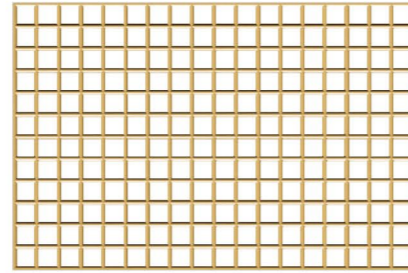


**300x450mm** — **Golden & Silver**  
Highlighter

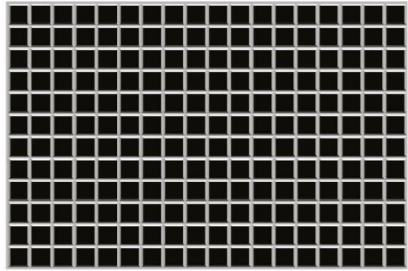
Application



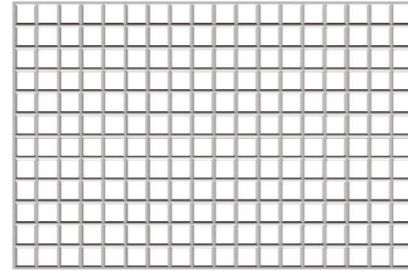
G-701-BLACK



G-701-WHITE



S-701-BLACK



S-701-WHITE



G-801-VEL



S-801-VEL



*Ultimate  
beauty*

**PACKING DETAILS**

Size : 300x450mm

Tiles Per Box 10 pcs.	Weight Per Box 18.5 kg. (Approx)	Area Coverage Per Box 1.35 Sq. Mtr.	Box Packing Type Thermocol
--------------------------	-------------------------------------	--	-------------------------------



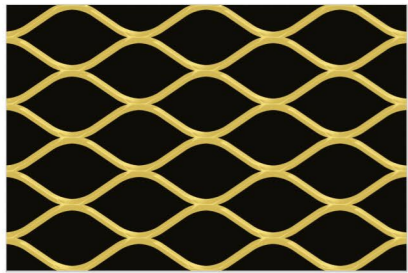
[www.omega.com](http://www.omega.com)



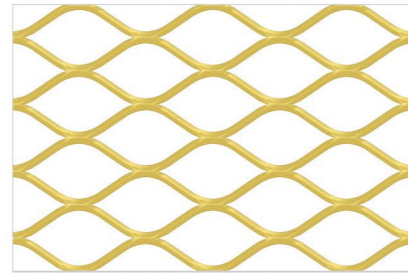


**300x450mm** — **Golden & Silver**  
Highlighter

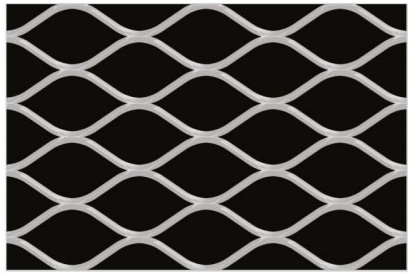
**Application**



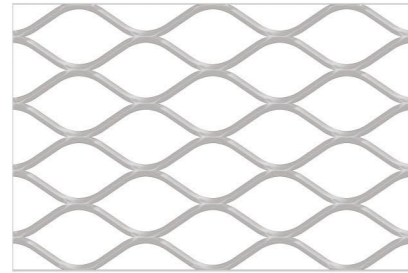
G-777-BLACK



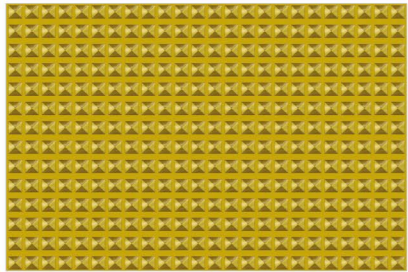
G-777-WHITE



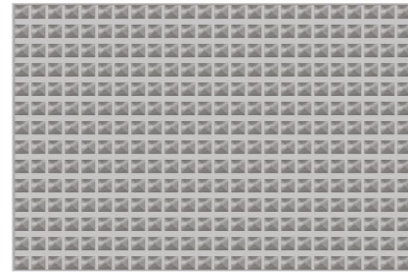
S-777-BLACK



S-777-WHITE



G-901 SQUARE



S-901 SQUARE

**PACKING DETAILS**

Size : 300x450mm

Tiles Per Box 10 pcs.	Weight Per Box 18.5 kg. (Approx)	Area Coverage Per Box 1.35 Sq. Mtr.	Box Packing Type Thermocol
--------------------------	-------------------------------------	--	-------------------------------

[www.omega.com](http://www.omega.com)



*Mesmerizing collection*