

**Omega**  
CERA DECOR

**OMEGA CERA DECOR**

Survey No. 35/P9, Opp Jaxx Vitrified Pvt. Ltd.  
Pipali - Jetpar Road, Morbi 363 642.

Call.  
**+91 99799 45546**

Mail.  
**omegaceradecor@gmail.com**

Web.  
**www.omega.com**

sfumato india pvt. ltd. Aug 2022

THE IDEAL  
BEAUTY COLLECTION



**SUGAR**  
SERIES  
\*\*\*  
**300x600mm**

## COMPANY PROFILE

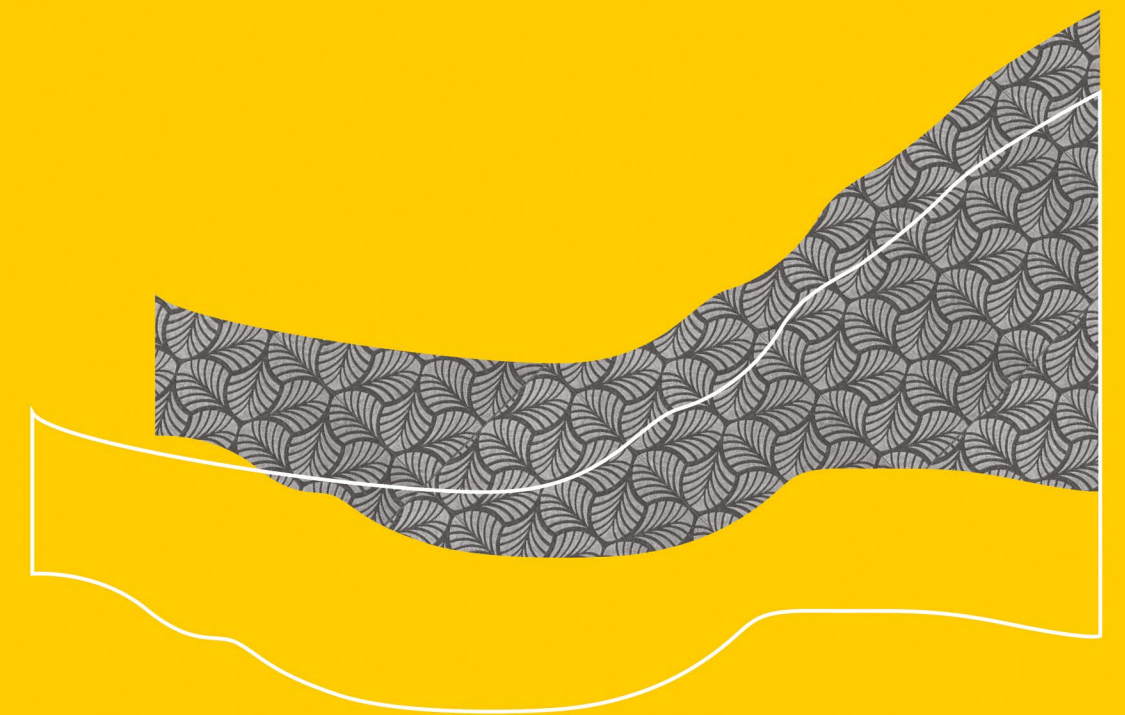
Let OMEGA TILES keep influence and inspire manufacture and designer in ceramic industries through its art of unique décor and golden – silver highlighter collection that bring out aesthetic interior world. Brilliance, beauty, and creative highlighter collection for interior wall that is bursting with extraordinary visual intensity.

In an era of glamorous world, people want their interior center of attraction and OMEGA TILES golden – silver highlighter collection perfectly fit in. Blending the traditional craftsmanship with the latest technology golden – silver highlighter made by OMEGA TILES with varieties of colors, pattern and design that match everyone's mood.

[www.omega.com](http://www.omega.com)

# SUGAR

Explore our creative and innovative design creation with different colour, finish and surface that gives your space to picture perfect look and feel together.



**Omega**  
CERA DECOR





## Luster Series

**300x600mm** — **Golden & Silver**  
Highlighter

### Application



G-1801-HL 1



S-1801-HL 1



G-1801-HL 2



S-1801-HL 2



G-17042-WHITE



S-17042-WHITE



G-17050-WHITE



S-17050-WHITE

### PACKING DETAILS

Size : 300x600mm

Tiles Per Box 8 pcs.	Weight Per Box 23.5 (kg. Approx.)	Area Coverage Per Box 1.44 Sq. Mtr.	Box Packing Type Thermocol
-------------------------	--------------------------------------	--	-------------------------------

[www.omega.com](http://www.omega.com)



*Perfect design*

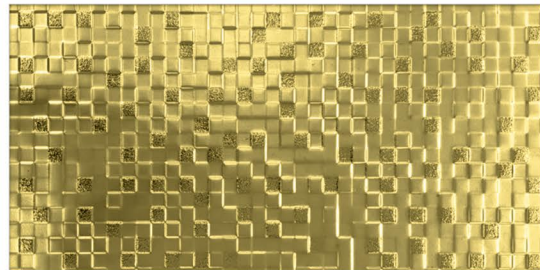




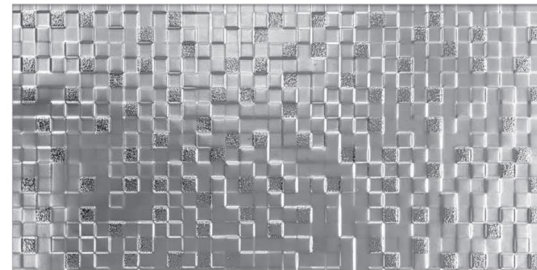
## Luster Series

**300x600mm** — **Golden & Silver**  
Highlighter

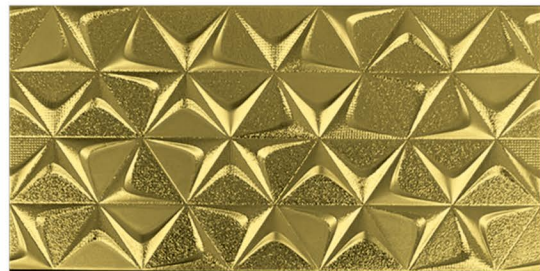
### Application



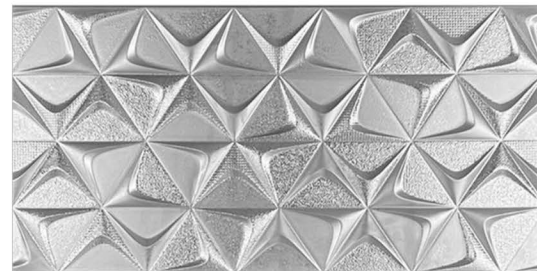
G-17043



S-17043



G-17044



S-17044



G-17045



S-17045



MG-HL 01



MG-HL 02



MG-HL 03



*Timeless  
beauty*

### PACKING DETAILS

Size : 300x600mm

Tiles Per Box 8 pcs.	Weight Per Box 23.5 (kg. Approx.)	Area Coverage Per Box 1.44 Sq. Mtr.	Box Packing Type Thermocol
-------------------------	--------------------------------------	--	-------------------------------



[www.omega.com](http://www.omega.com)





## Sugar Series

**300x600mm** — **Golden & Silver**  
Highlighter

### Application



GL-31001



SL-31001

### Sugar Effect



GL-31002



SL-31002

### Sugar Effect



### PACKING DETAILS

Size : 300x600mm

Tiles Per Box 8 pcs.	Weight Per Box 23.5 (kg. Approx.)	Area Coverage Per Box 1.44 Sq. Mtr.	Box Packing Type Thermocol
-------------------------	--------------------------------------	--	-------------------------------



www.omega.com

KEEP THE STRE AWAY

*Inspiring grace*





## Sugar Series

**300x600mm** — **Golden & Silver**  
Highlighter

### Application



GL-31003



SL-31003

### Sugar Effect



GL-31004



SL-31004

### Sugar Effect



### PACKING DETAILS

Size : 300x600mm

Tiles Per Box <b>8 pcs.</b>	Weight Per Box <b>23.5</b> (kg. Approx.)	Area Coverage Per Box <b>1.44 Sq. Mtr.</b>	Box Packing Type <b>Thermocol</b>
--------------------------------	---	---	--------------------------------------

[www.omega.com](http://www.omega.com)







## Sugar Series

**300x600mm** — **Golden & Silver** Highlighter

### Application



GL-31005



SL-31005



GL-31006



SL-31006

### Sugar Effect



### Sugar Effect



*Modern  
artistry*

### PACKING DETAILS

Size : 300x600mm

Tiles Per Box 8 pcs.	Weight Per Box 23.5 (kg. Approx.)	Area Coverage Per Box 1.44 Sq. Mtr.	Box Packing Type Thermocol
-------------------------	--------------------------------------	--	-------------------------------

[www.omega.com](http://www.omega.com)





## Sugar Series

300x600mm — Golden & Silver Highlighter

### Application

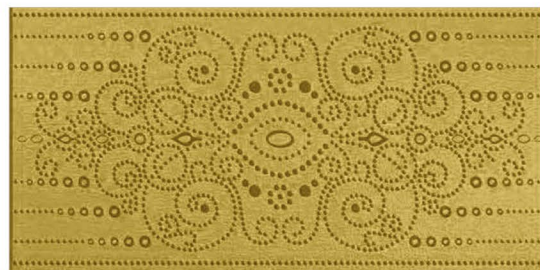
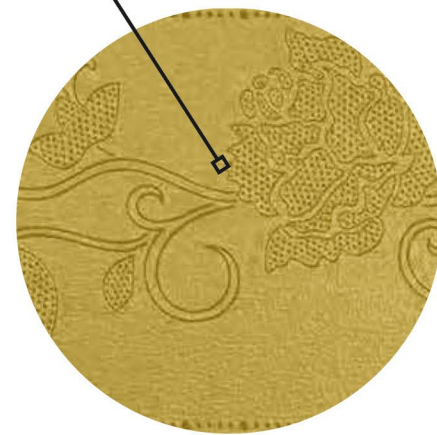


GL-31007

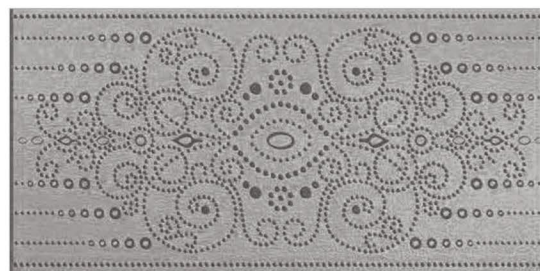


SL-31007

### Sugar Effect

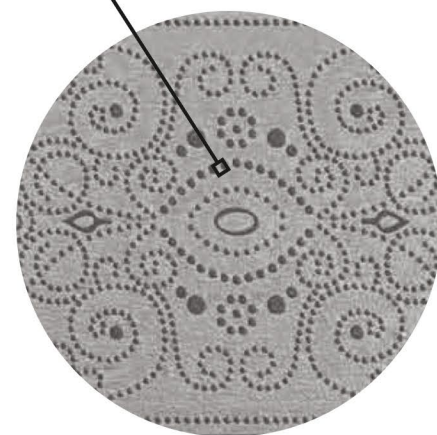


GL-31008



SL-31008

### Sugar Effect



### PACKING DETAILS

Size : 300x600mm

Tiles Per Box 8 pcs.	Weight Per Box 23.5 (kg. Approx.)	Area Coverage Per Box 1.44 Sq. Mtr.	Box Packing Type Thermocol
-------------------------	--------------------------------------	--	-------------------------------

www.omega.com



*Magnificent style*





## Sugar Series

**300x600mm** — **Golden & Silver**  
Highlighter

### Application



GL-31009



SL-31009



GL-31010

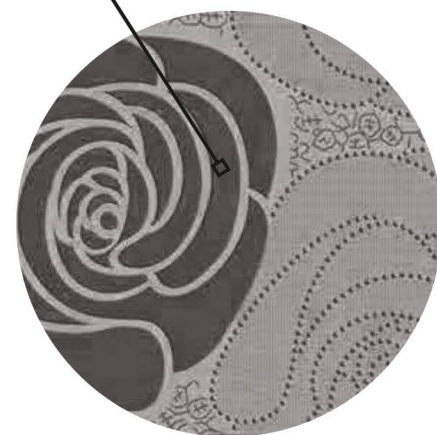


SL-31010

Sugar Effect



Sugar Effect



### PACKING DETAILS

Size : 300x600mm

Tiles Per Box <b>8 pcs.</b>	Weight Per Box <b>23.5</b> (kg. Approx.)	Area Coverage Per Box <b>1.44 Sq. Mtr.</b>	Box Packing Type <b>Thermocol</b>
--------------------------------	---	---	--------------------------------------

[www.omega.com](http://www.omega.com)

