

Omega
CERA DECOR

S P E C T A
C U L A R
A R T

Digital Series

**GOLDEN
& SILVER**
SERIES

•••
300x600mm

COMPANY PROFILE

Let OMEGA TILES keep influence and inspire manufacture and designer in ceramic industries through its art of unique décor and golden – silver highlighter collection that bring out aesthetic interior world. Brilliance, beauty, and creative highlighter collection for interior wall that is bursting with extraordinary visual intensity.

In an era of glamorous world, people want their interior center of attraction and OMEGA TILES golden –silver highlighter collection perfectly fit in. Blending the traditional craftsmanship with the latest technology golden – silver highlighter made by OMEGA TILES with varieties of colors, pattern and design that match everyone's mood.

www.omega.com



GOLDEN
&
SILVER

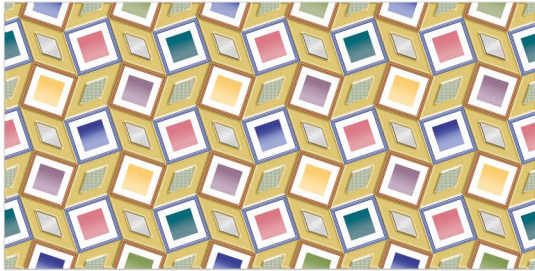
Make your decor extraordinary.
we are presenting superior
collection for your every
ambience that make your
ambience mesmerizing for
everyone.



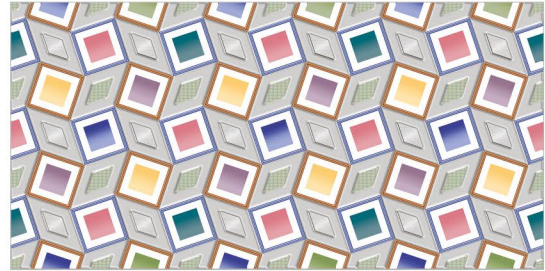
Digital Series

300x600mm — Golden & Silver Highlighter

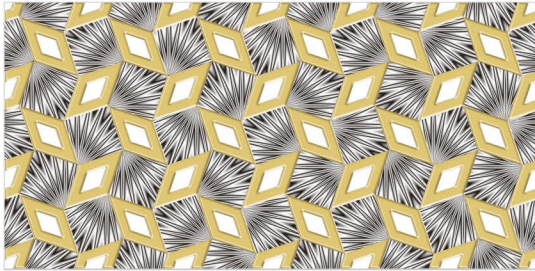
Application



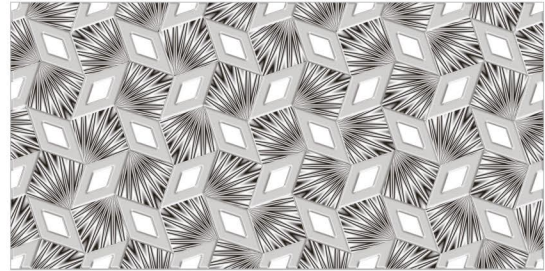
G-55-HL-1



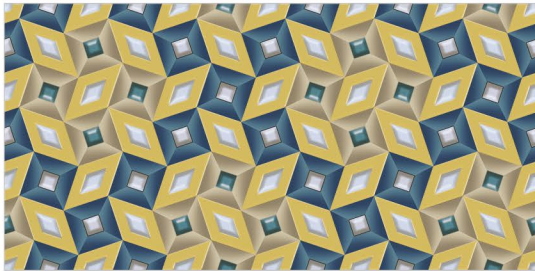
S-55-HL-1



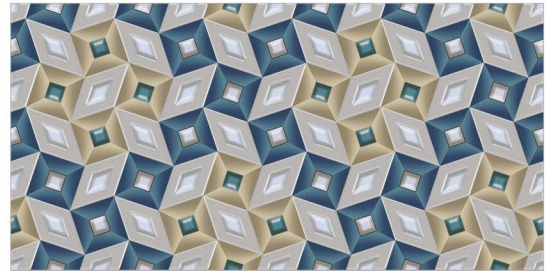
G-55-HL-2



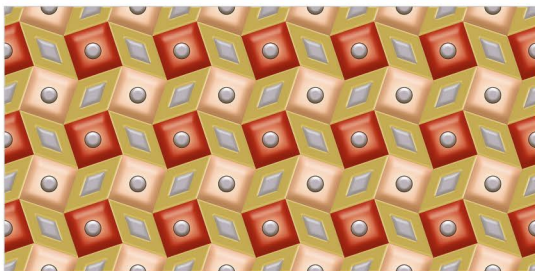
S-55-HL-2



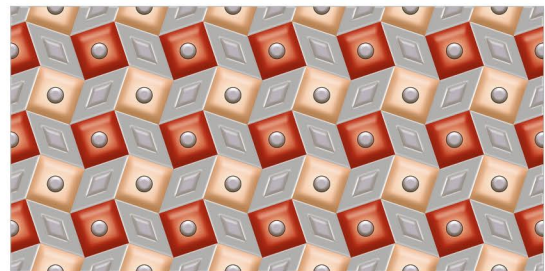
G-55-HL-3



S-55-HL-3



G-55-HL-4



S-55-HL-4

PACKING DETAILS

Size : 300x600mm

Tiles Per Box
8 pcs.

Weight Per Box
23.5 (kg. Approx)

Area Coverage Per Box
1.44 Sq. Mtr.

Box Packing Type
Thermocol



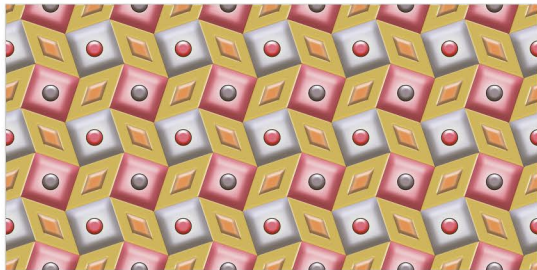
www.omega.com



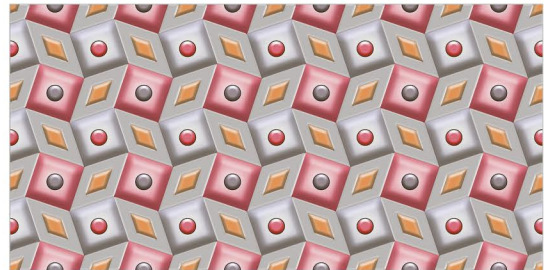
Digital Series

300x600mm — **Golden & Silver** Highlighter

Application



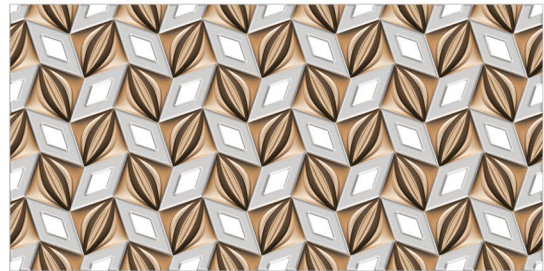
G-55-HL-5



S-55-HL-5



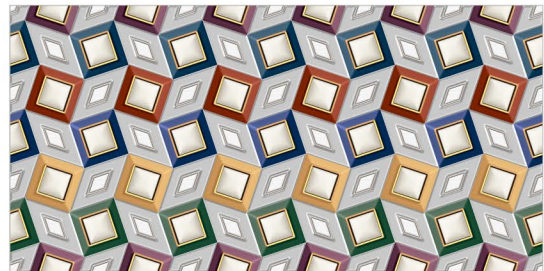
G-55-HL-6



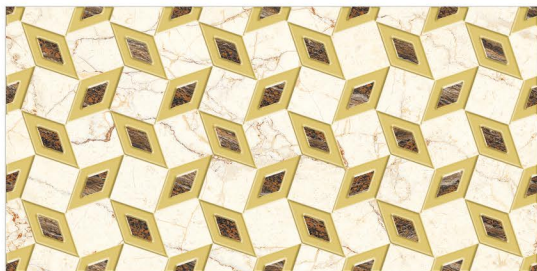
S-55-HL-6



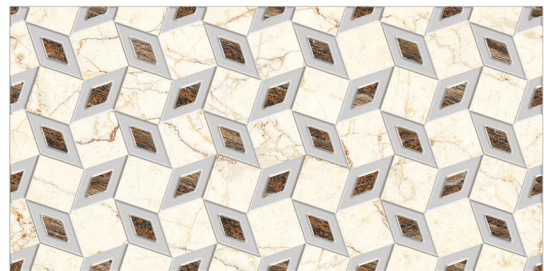
G-55-HL-7



S-55-HL-7



G-55-HL-8



S-55-HL-8

PACKING DETAILS

Size : 300x600mm

Tiles Per Box 8 pcs.	Weight Per Box 23.5 (kg. Approx)	Area Coverage Per Box 1.44 Sq. Mtr.	Box Packing Type Thermocol
--------------------------------	--	---	--------------------------------------



Digital Series

300x600mm — Golden & Silver Highlighter

Application



G-56-HL-1



S-56-HL-1



G-56-HL-2



S-56-HL-2



G-56-HL-3



S-56-HL-3



G-56-HL-4



S-56-HL-4

PACKING DETAILS

Size : 300x600mm

Tiles Per Box 8 pcs.	Weight Per Box 23.5 (kg. Approx)	Area Coverage Per Box 1.44 Sq. Mtr.	Box Packing Type Thermocol
-------------------------	-------------------------------------	--	-------------------------------



www.omega.com



Digital Series

300x600mm — **Golden & Silver** Highlighter

Application



G-56-HL-5



S-56-HL-5



Ultimate beauty



Digital Series

300x600mm — **Golden & Silver** Highlighter

Application



G-57-HL-1



S-57-HL-1



G-57-HL-2



S-57-HL-2



G-57-HL-3



S-57-HL-3



G-57-HL-4



S-57-HL-4

PACKING DETAILS

Size : 300x600mm

Tiles Per Box 8 pcs.	Weight Per Box 23.5 (kg. Approx)	Area Coverage Per Box 1.44 Sq. Mtr.	Box Packing Type Thermocol
--------------------------------	--	---	--------------------------------------



www.omega.com



Digital Series

300x600mm — **Golden & Silver** Highlighter

Application



G-57-HL-5



S-57-HL-5



Superior class

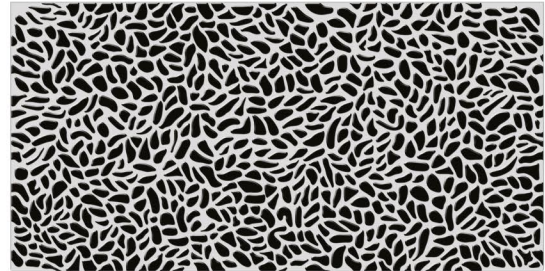


300x600mm — **Golden & Silver**
Highlighter

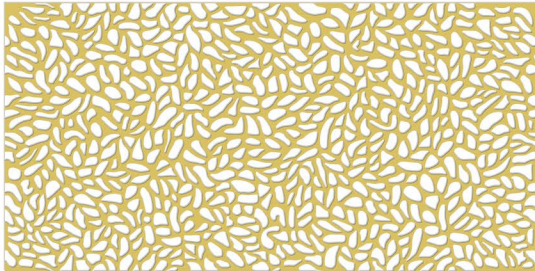
Application



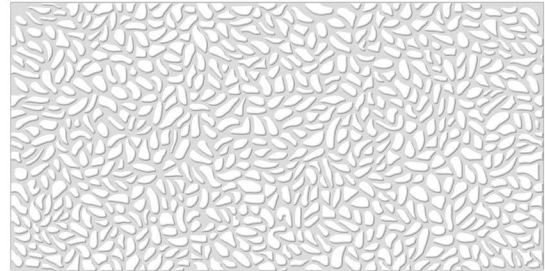
G-59-BLACK



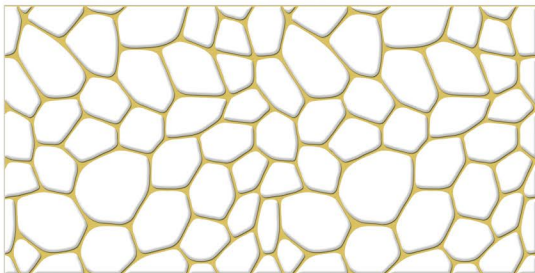
S-59-BLACK



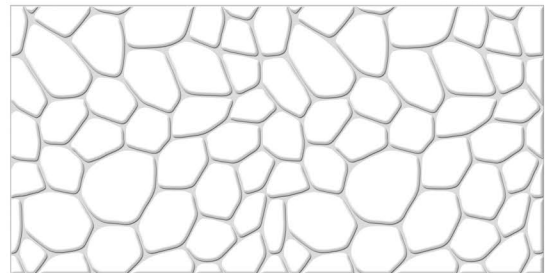
G-59-WHITE



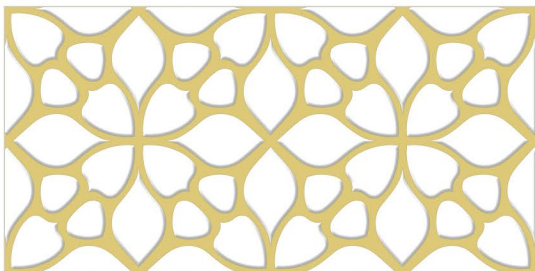
S-59-WHITE



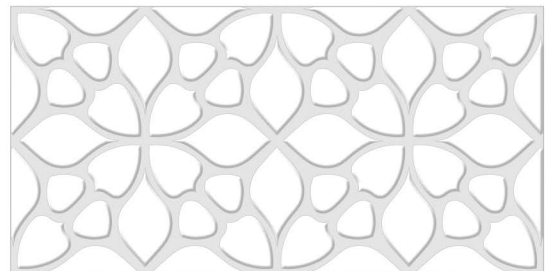
G-58-WHITE



G-58-WHITE



G-60-WHITE



S-60-WHITE

PACKING DETAILS

Size : 300x600mm

Tiles Per Box 8 pcs.	Weight Per Box 23.5 (kg. Approx)	Area Coverage Per Box 1.44 Sq. Mtr.	Box Packing Type Thermocol
--------------------------------	--	---	--------------------------------------





Digital Series

300x600mm — **Golden & Silver** Highlighter

Application



G-1701



S-1701



G-1801



S-1801



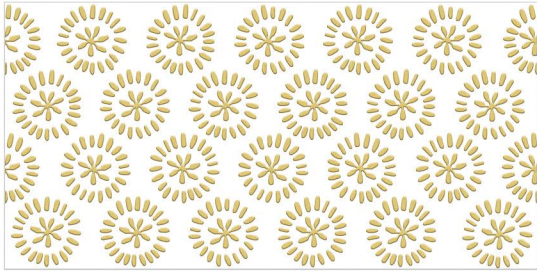
Superior class



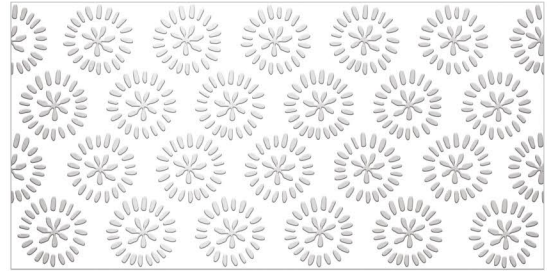
Digital Series

300x600mm — **Golden & Silver**
Highlighter

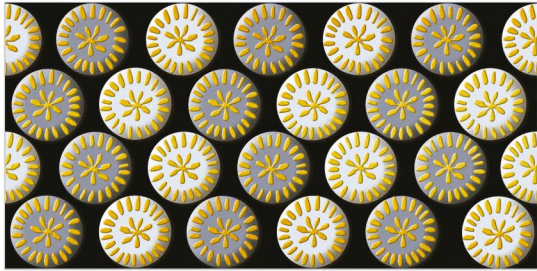
Application



G-61-HL-1



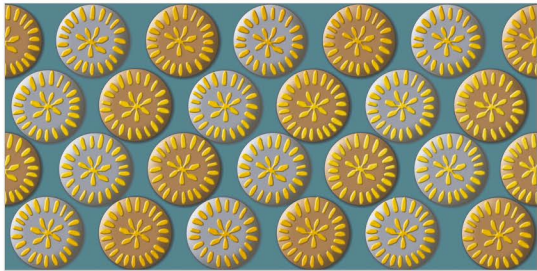
S-61-HL-1



G-61-HL-2



S-61-HL-2



G-61-HL-3



S-61-HL-3

PACKING DETAILS

Size : 300x600mm

Tiles Per Box 8 pcs.	Weight Per Box 23.5 (kg. Approx)	Area Coverage Per Box 1.44 Sq. Mtr.	Box Packing Type Thermocol
--------------------------------	--	---	--------------------------------------



www.omega.com



*Timeless
aesthetic*



OMEGA CERA DECOR

Survey No. 35/P9, Opp Jaxx Vitrified Pvt. Ltd.
Pipali - Jetpar Road, Morbi 363 642.

Call.
+91 99799 45546

Mail.
omegaceradecor@gmail.com

Web.
www.omega.com

